

Absolute encoders - SSI/BISS+SinCos

Integral bearing for integration in motors



FNC SSI2048 / BiSS 2048 Series, SSI, BiSS + SinCos



FNC SSI2048B-R7

(Standard comes with expanding coupling and 7 meter cable)

Features

- Compact robust motor integration design
- 12...19bit SSI/BISS accurate position information
- 2048 PPR sin cosine accurate speed information
- Installation diameter 65mm
- 1:10 taper shaft
- IP67 protection class

Technical data - mechanical design

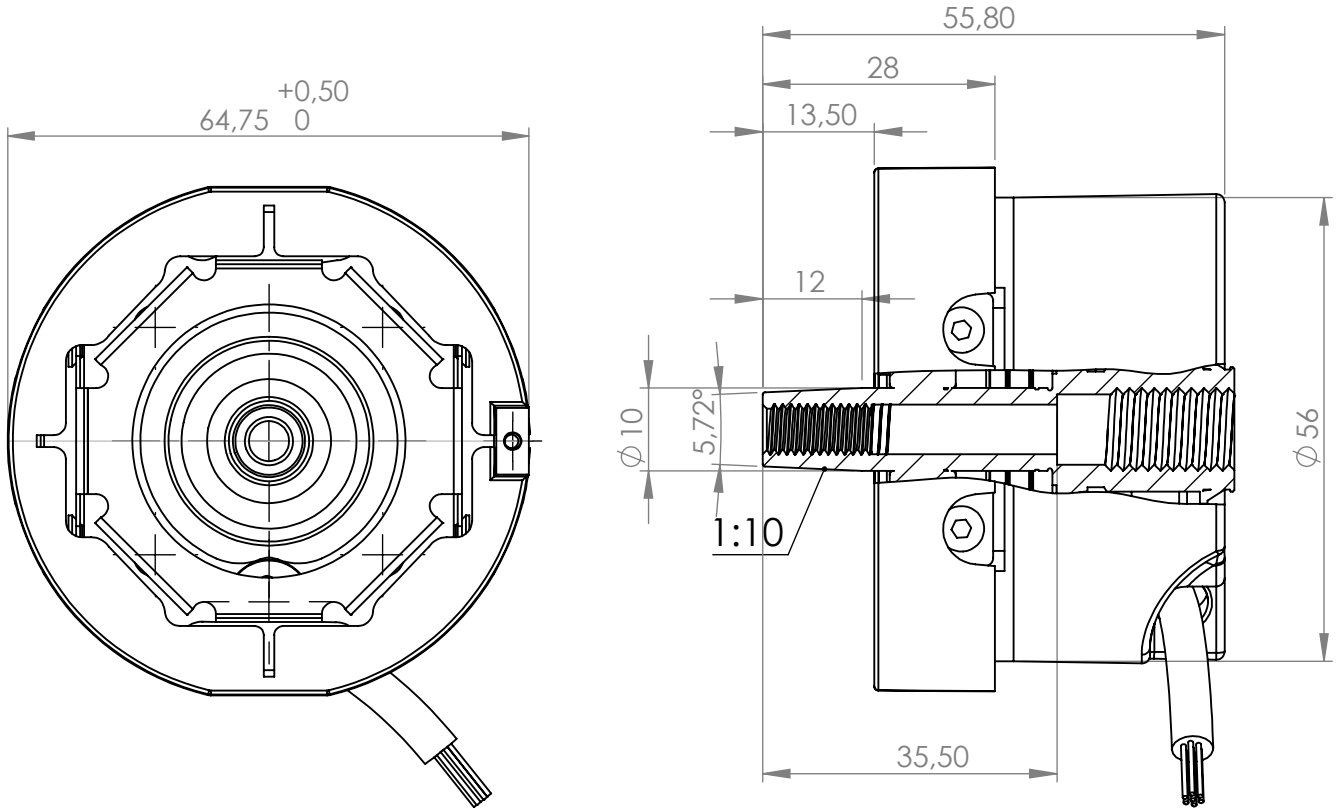
Dimensions (flange)	ø56 mm
Clamp mounting diameter	65 mm
Protection DIN EN 60529	IP 67
Operating speed	≤10000 rpm
Starting torque	≤0.03 Nm (IP 67)
Materials	Housing : Aluminium Flange : Aluminium Shaft : Stainless steel
Shaft specs	Taper shaft Ø 9.25 Taper 1:10
Operating temperature	-40...+110 °C
Storage temperature	-40 °C up to +120 °C
Weight approx.	250 g
Approval	CE

Technical data - electrical ratings

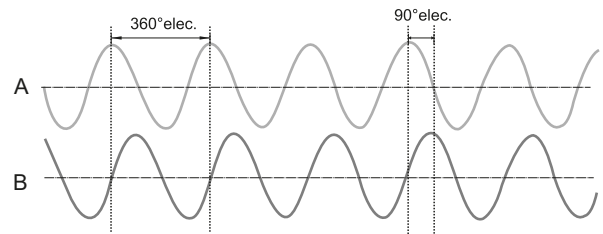
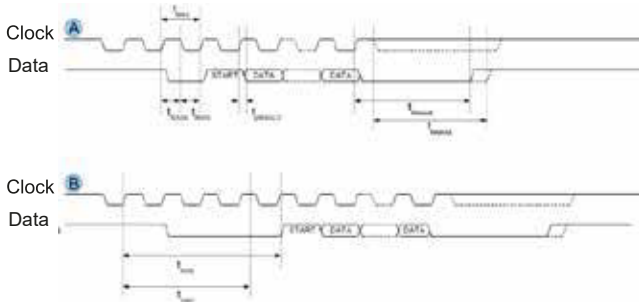
Voltage supply	4.75VDC to 5.5VDC
Protection:	Output short circuit protection. Reverse polarity protection
Consumption w/o load	≤120 mA (5 VDC)
Interface, Output	Sine cosine / 1 Vpp
Resolution (steps/turn)	up to 19 bit
Absolute accuracy	±0.17°
Absolute angle error	0.087°
Output frequency	500 kHz (max.)
Output circuit	1 Vpp incremental Sin/Cos differential driver

FNC SSI2048 / BiSS 2048 Series, SSI, BiSS + SinCos

Mechanical Dimensions



Pulse Diagram













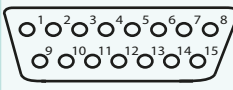
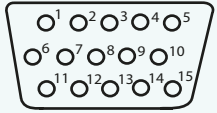


Signals shown at CW rotation with view on shaft's end

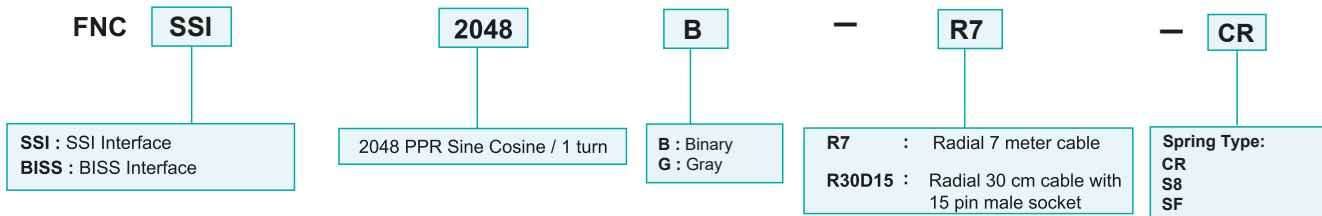
Symbol	Parameter	Conditions	Min	Max	Unit
tMAS	Permissible Clock Period	TIMO in accordance	100	2 x timeout	ns
tMASH	Permissible Signal Hi Level Duration		50	ttimeout	ns
tMASl	Permissible Signal Lo Level Duration		50		ns
treq	REQ Lo Level Duration		50	ttimeout	ns

FNC SSI2048 / BiSS 2048 Series, SSI, BiSS + SinCos

Cable / Connector Wiring

Function	FNC SC2048 R7 (Direct 7 meter cable)		FNC SC2048 R03-2D15	FNC SC2048 R7-3D15	FNC SC2048 R03-3D15
+VB 	Brown	Kahverengi	pin 9	pin 9	pin 9
GND 	White	Beyaz	pin 11	pin 7	pin 7
A 	Green	Yeşil	pin 1	pin 5	pin 5
A' 	Green-Black	Yeşil-Siyah	pin 2	pin 6	pin 6
B 	Yellow	Sarı	pin 3	pin 8	pin 8
B' 	Yellow-Black	Sarı-Siyah	pin 4	pin 1	pin 1
CLK 	Blue	Mavi	pin 5	pin 10	pin 11
CLK- 	Blue-Black	Mavi-Siyah	pin 6	pin 11	pin 10
DAT 	Orange	Turuncu	pin 7	pin 12	pin 12
DAT- 	Orange-Black	Turuncu-Siyah	pin 8	pin 13	pin 13
PRS 	Gray	Gri	pin 12	pin 3	pin 3
DIR 	Gray-Black	Gri-Siyah	pin 13	pin 4	pin 4
Shield	Connected to housing		 2 row, 15 pin dsub	 3 row, 15 pin dsub	

Encoder Part Number



Female Cable Connector

