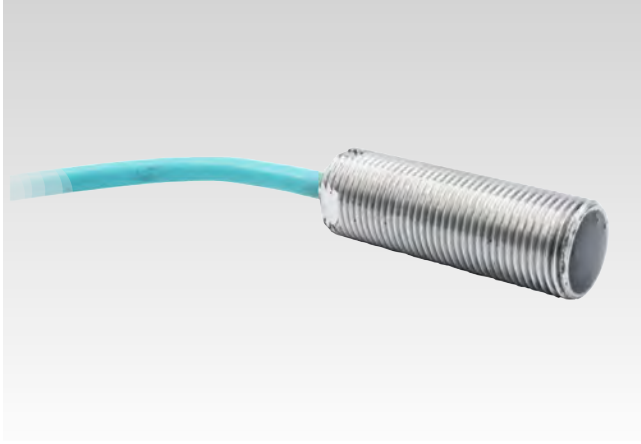


Contactless Speed Sensor

FNC CSS Series - Contactless Speed Sensor



Features

- Detecting speed and direction of rotation of ferromagnetic gearwheels with high resolution
- Wide frequency range
- Wide temperature range

Technical data - electrical ratings

Voltage supply	9VDC to 30VDC
Consumption w/o load	max. 20 mA
Frequency range	0...20 kHz
Push-pull outputs	$I_{max} = \pm 30$ mA
Output voltage HI UHI	5V
Output voltage LO ULO	0,6V
EMC compliant	EN 50121-3-2
Approval	CE

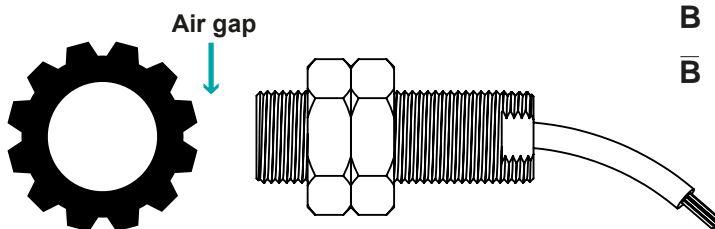
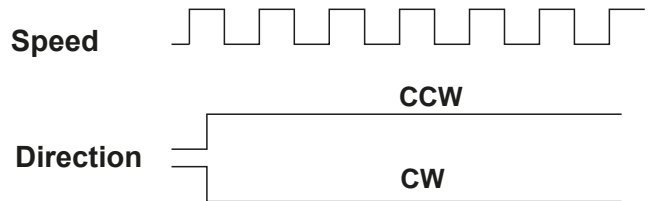
Technical data - mechanical design

Operating temperature	-40...+125 °C
Weight approx.	150 g
Protection class	Sensor head :IP68
Shock & vibration	EN 61373 Cat.3

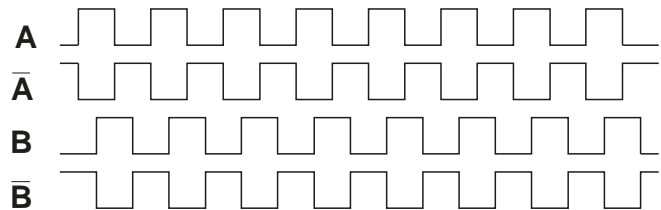
Cable Wiring

Function	Color	Renk	Explanation
+VB	Brown	Kahve	Supply Voltage
GND	White	Beyaz	Ground
Direction	Green	Yeşil	A Channel
Speed	Yellow	Sarı	B Channel

Pulse Diagram

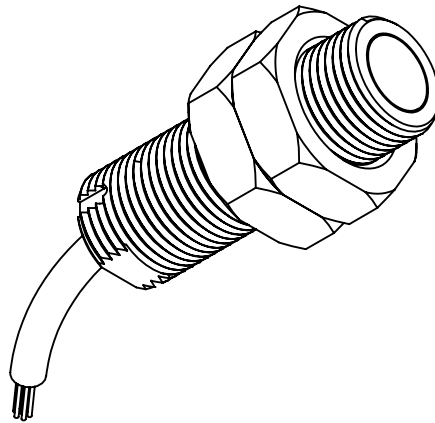
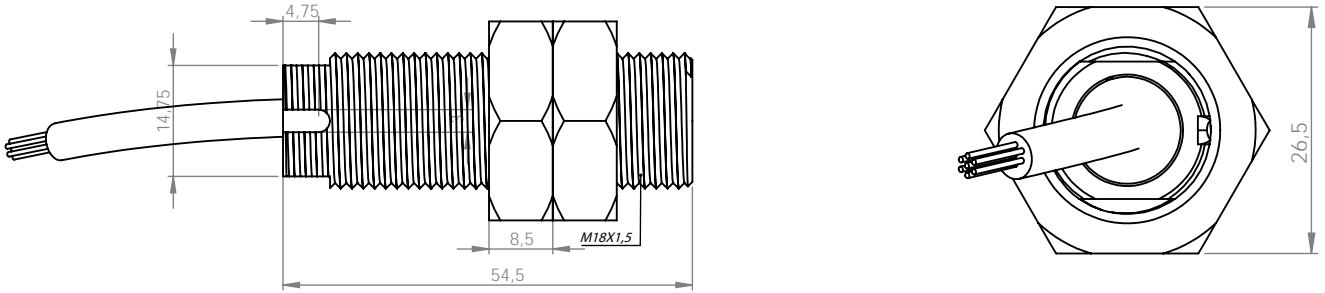


Ferromagnetic Rotor



FNC CSS Series - Contactless Speed Sensor

Mechanical Dimensions



Encoder Part Number

FNC CSS 18 M30 2SD 245V – A3

Sensor
CSS : Contactless Speed Sensor

Sensor head diameter
18 : 18 mm

Target module
M1.0 : 1 module
M1.5 : 1.5 module
M2.0 : 2 module
M2.5 : 2.5 module
M3.0 : 3 module
M4.0 : 4 module
M30.0 : 30 module

Connection
A3 : 3 meter cable length

Connection
5V : 5V in/out 245V : 5-30 in/5V out 30V : 5-30 in/out

Electronic type
2AB : 2 channels (A, B)
2SD : 2 channels (Speed, Direction)
4AB : 4 channels (A,A',B, B')