

Hand Wheel Encoder

FNC EL100 Hand Wheel Encoder Series



Features

- Simple machine control by hand during operation.
- Metal gear with good rotating hand feeling.
- 100 ppr standard click
- Line driver output
- Strong anti-interface ability.
- 5-30V wide supply range.

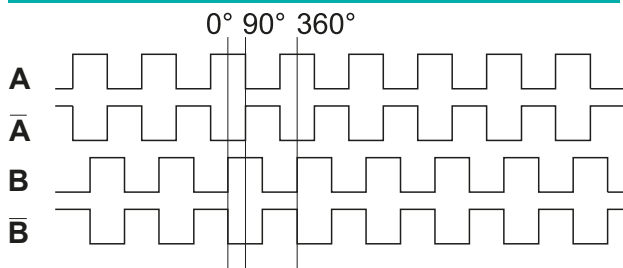
Technical data - electrical ratings

Voltage supply	4.75VDC to 30VDC (except 5V version)
Consumption	<25 mA
Output circuit	Push-pull short circuit proof
Duty cycle	%50
Frequency response	0~5 kHz
Output signals	90° shifted A and B, inverted

Technical data - mechanical design

Material	Shaft : Stainless steel Housing : Aluminum Cover: ABS
Operating speed	≤200 r/min
Max. operating speed	600 r/min
Operating temperature	-10...+85C°
Weight approx.	65 g

Pulse Diagram



Connection

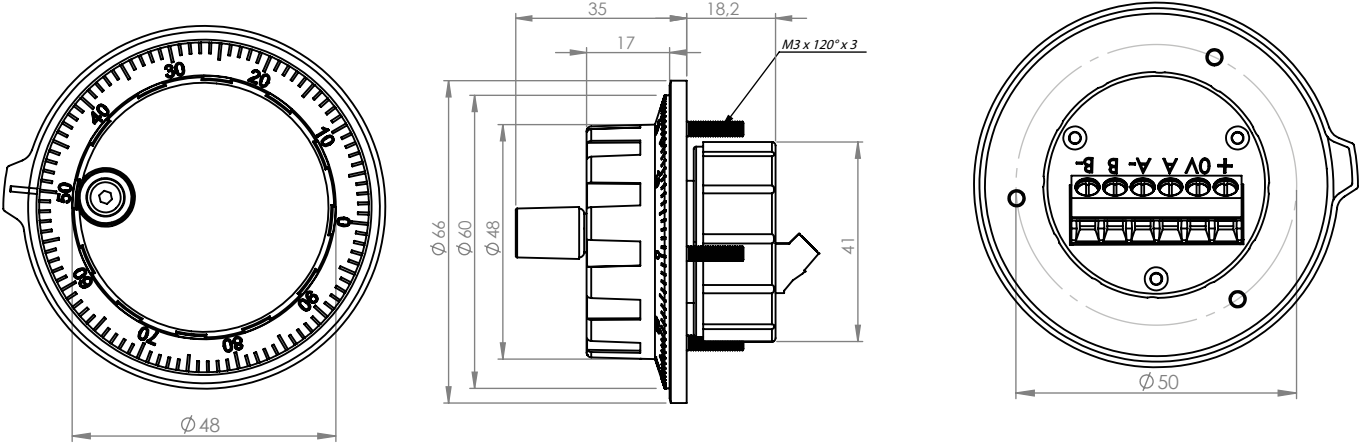


Function	Pin	Explanation
+VCC	1	Supply Voltage
GND	2	Ground
A	3	A Channel
A'	4	A Inverted Channel
B	5	A Channel
B'	6	B Inverted Channel

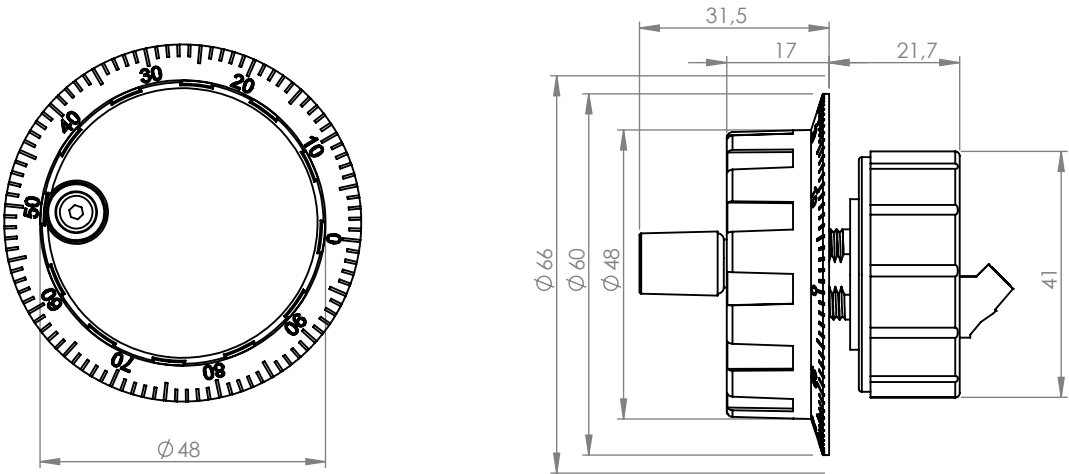
FNC EL100 Hand Wheel Encoder Series

Dimensions

EL100



EL100E



Part Number

FNC **EL** **100** **E** *Wheel & encoder base can be seperated

FNC **EL** **100** *Encoder is mounted with 3 M3X120° screws at 50 mm diameter