

## MAS Series Installation & User Guide



! This preliminary information is not guarantee of device characteristics or performance.  
! All rights to technical changes reserved.

## Table of Contents

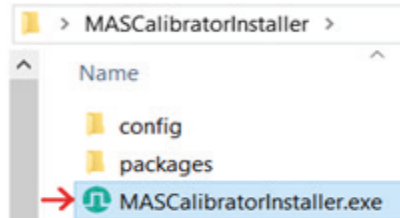
---

<b>1. Installation</b>	<b>3</b>
<b>2. User Guide</b>	<b>5</b>

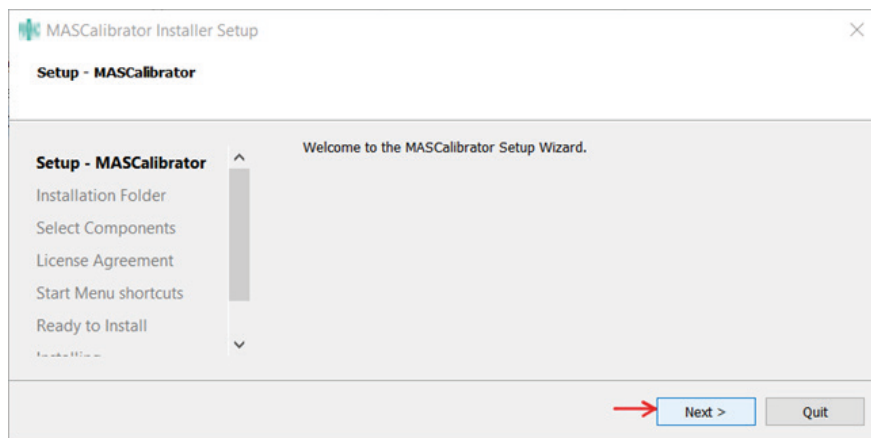
## 1. Installation

---

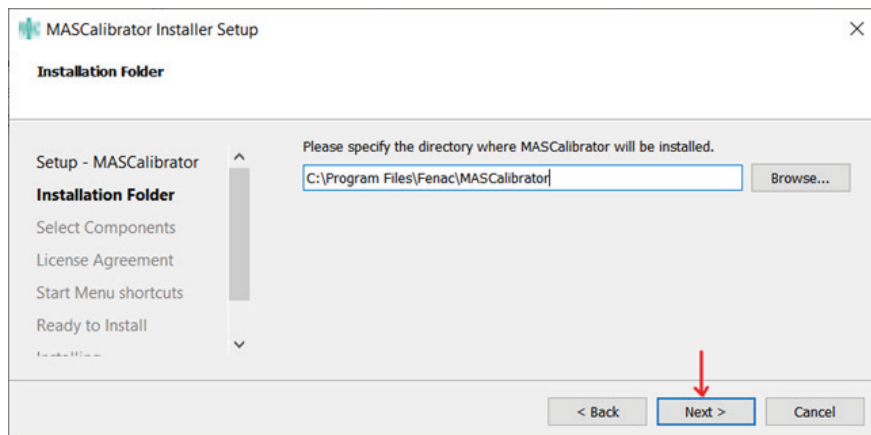
Click and open MASCalibratorInstaller.exe program



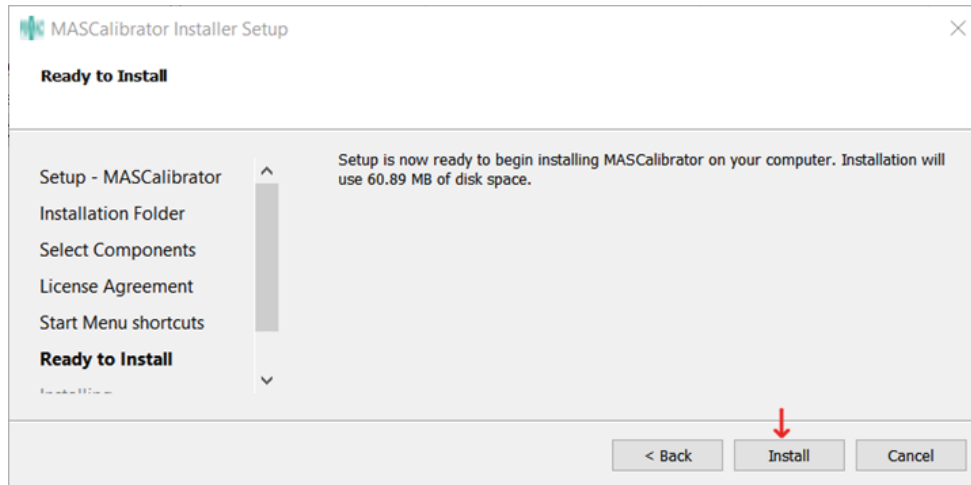
Click Next button



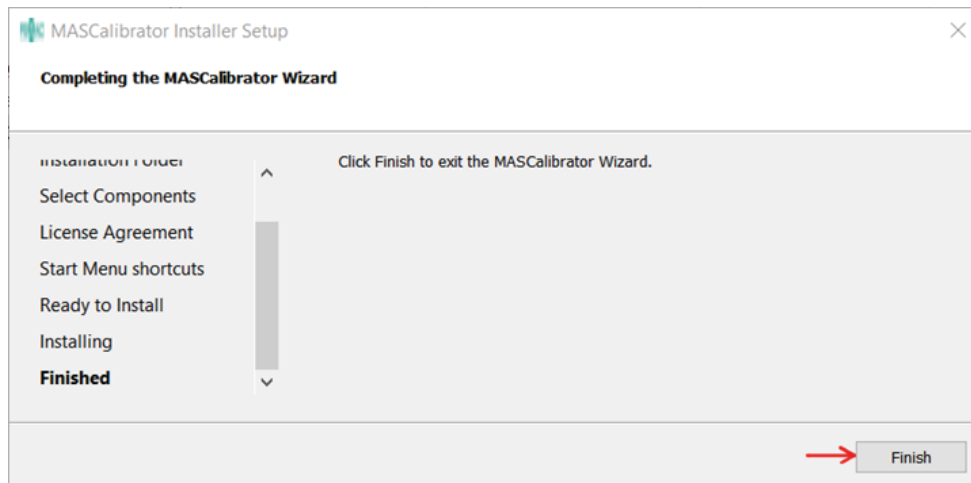
Select directory and click Next button.



Click other Next buttons until you reach Install button.



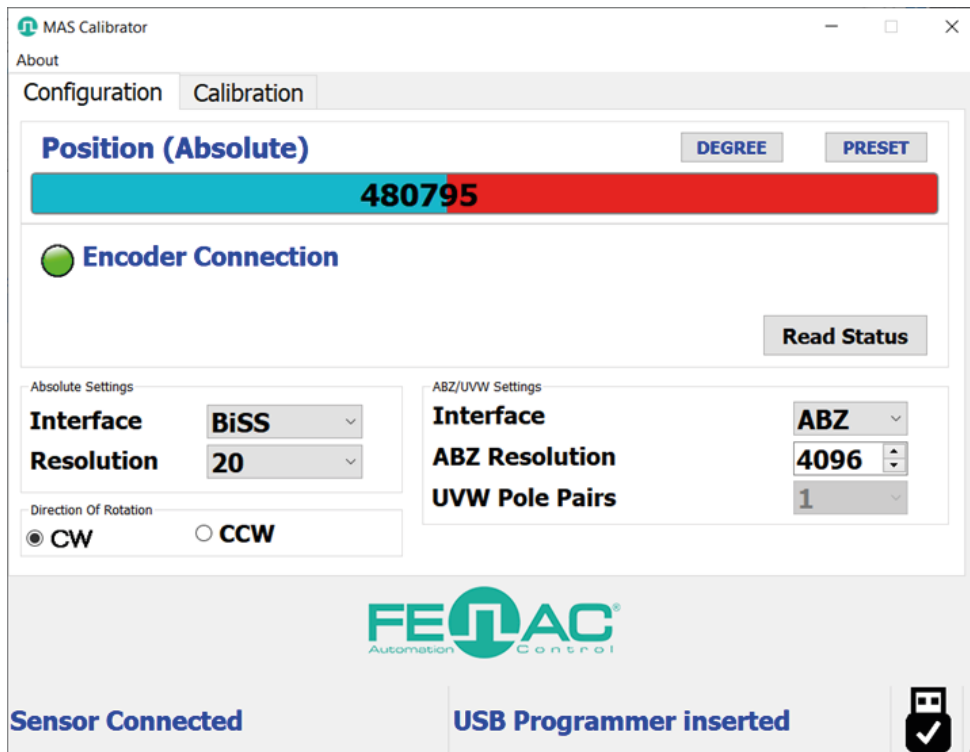
Click on Yes If you see User Account Management window. After that click "I Agree" button to install some drivers. Finally click on Finish button.



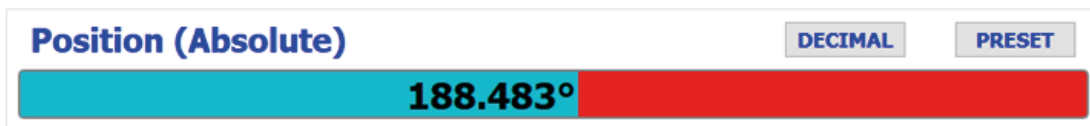
## 2. User Guide

---

If you install MAS Calibrator successfully you can double click to open icon on your Desktop. Otherwise you can follow our [INSTALLATION GUIDE.pdf](#) file to install it. If there is no connection problem between FENAC encoder and BISS/SSI Adaptor you should see this screen.




You can see the Absolute Position value with progress bar. You can click on DEGREE button so see this in range 0 to 360 degree.



If you click on PRESET button you can set the position as zero.

You can Click on Read Status button to see POSITON ERROR and Magnet Out of Range indicators about the encoder.

-  **Encoder Connection**
-  **POSITION ERROR**
-  **Magnet Out of Range**

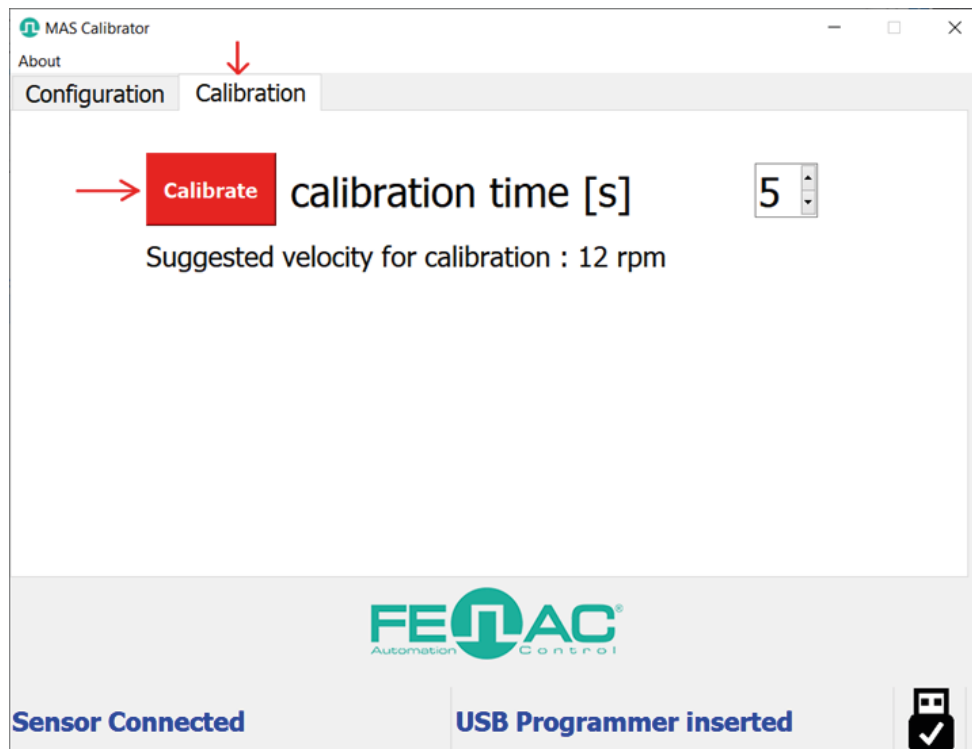
**Read Status**

You can select SSI or BISS interface and Resolutions for your encoder on Absolute Settings part.

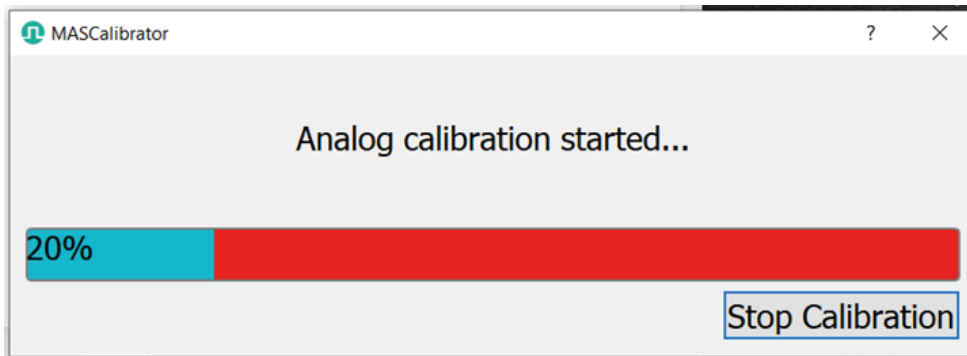
Likewise you can select ABZ and UVW interfaces, ABZ Resolutions and UVW Pole Pairs on ABZ/UVW Settings.

If you select CW (Clock wise) position value increases with clock wise direction. On th other hand if you select CCW (Counter Clock wise) position value increases with counter clock wise direction.

Click on Calibration tab to open calibration menu. You can set the calibration time (default it is 5 seconds) for your preference. Before clicking on Calibrate button prepare your encoder setup to rotate constant speed. Then click Calibrate.



You should keep rotating your encoder device until calibration finishes.



If calibration is successful you should see this info message.

